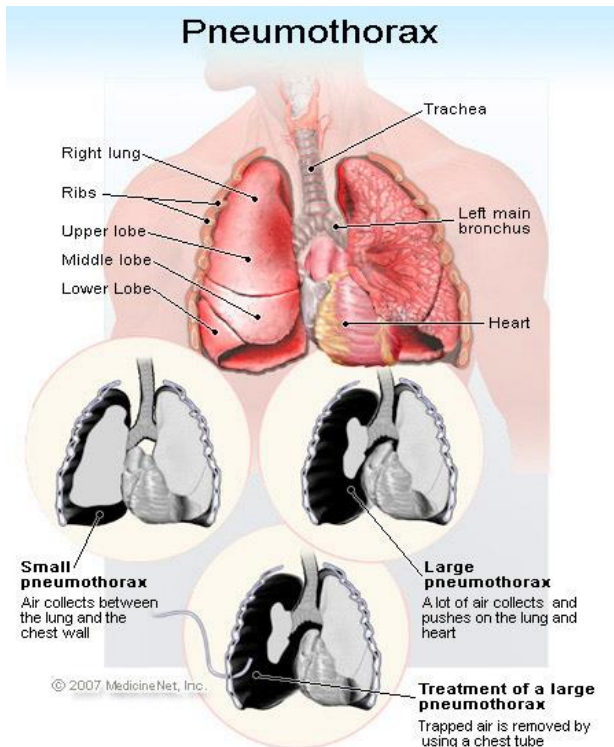


Pneumothorax

WHAT IS A PNEUMOTHORAX

A pneumothorax occurs when air becomes trapped between the lung and the surrounding chest wall. There are many reasons why this can occur, however, it is most common in men who smoke.



www.emedicinehealth.com/collapsed_lung



Pneumothorax

Treatment and Follow Up

A pneumothorax and its associated symptoms may improve without treatment, particularly in smaller ones. However, sometimes the air may need to be removed using a needle or a drain. This may require you to be admitted to hospital.

After discharge, a follow up appointment and an X-ray will be organised to ensure that the pneumothorax has resolved completely.

Things to Watch Out for after you go Home

- Worsening shortness of breath;
- Worsening chest pain;
- Feeling faint or unwell;
- Persistent or worsening cough.

If any of the above occurs, please re-attend the Emergency Department.

Long-Term General Advice

- Avoid flying until X-ray confirmation of resolution. Some airlines will specify a further delay (often one to two weeks), please contact your carrier;
- Having had a pneumothorax excludes you permanently from taking part in activities such as scuba diving unless further treatment is given (see your GP for further advice), or discuss in clinic when you attend;



Pneumothorax

- If you smoke, you are encouraged to give up. See www.nhs.uk/smokefree or your GP for further advice.

Further Advice / Instructions

.....

.....

.....

.....

.....

.....

.....

.....

.....

.....

.....

.....

.....

.....

.....

For 24 hour advice, contact NHS Direct on 111

Please retain this leaflet for future reference.



Pneumothorax

For further advice or information you can telephone your local Minor Injury Unit (MIU):

Chippenham Community Hospital

Rowden Hill

Chippenham

SN15 2AJ

Tel: 01249 456 403/4

Open: 07:00 to 23:00; seven days a week

Trowbridge Community Hospital

Adcroft Street

Trowbridge

BA14 8PH

Tel: 01225 711 329

Open: 07:00 to 23:00; seven days a week

Smoking will not be permitted on any NHS site in England. Smoking will not be permitted within any of our buildings or anywhere outside on our sites. Smoking facilities will not be provided. Please be considerate of others when vaping in hospital grounds.

This information sheet is available to order in other languages and formats. If you would like a copy, please contact us on 01793 604031 or email gwh.pals@nhs.net.

Document Control

Division: Unscheduled Care

Department: Emergency Department

Approved Date: June 2019

Next Review Date: July 2022

Document Number: USC - PIL0077